

# GESTALT PRINCIPLES

An abstract geometric composition featuring various shapes and colors. On the left, there are overlapping triangles in red, yellow, and dark blue. In the center, a large blue semi-circle is positioned on a red background, with a dark blue triangle to its right. On the right side, a yellow semi-circle is partially visible, overlapping a dark blue semi-circle. The overall design is clean and modern, using a limited color palette.

03

# What are gestalt Principles?

- **Gestalt** is a german word that means shape or form
- **Gestalt principles** describe how humans group similar elements, recognize patterns, and simplify complex images when they perceive objects
- These principles are applicable when creating your wireframe like proximity and similarity.

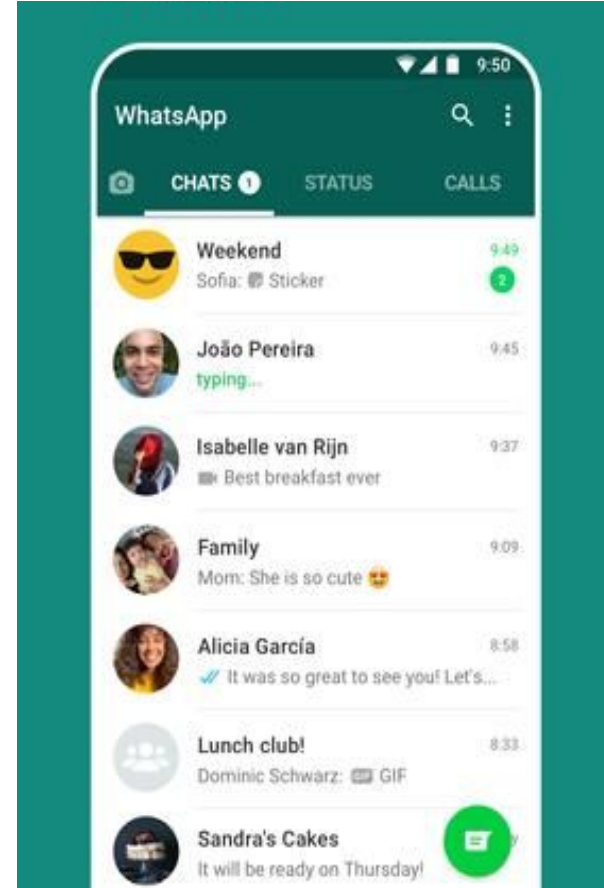


# What do you see here?



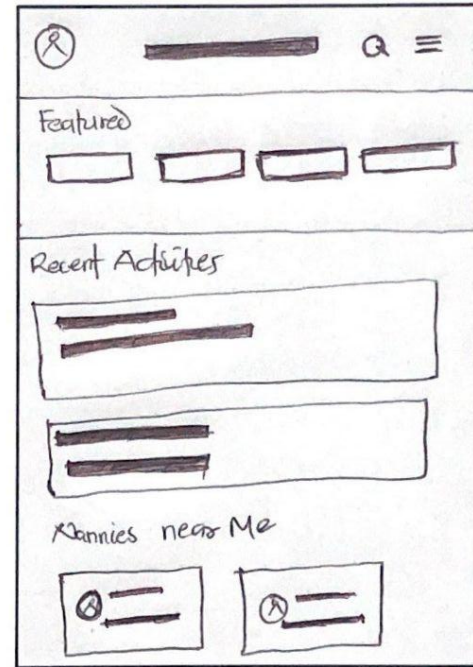
# Principle of Simplicity

- This principle perceives that elements that look the same have the same function
- Elements may look similar based on color, shape and size.
- Always make elements that have similar functions to look the same



# Proximity Principle

It states that elements that are close together are more related than things that are spaced farther apart. Elements which are together are seen as a group.



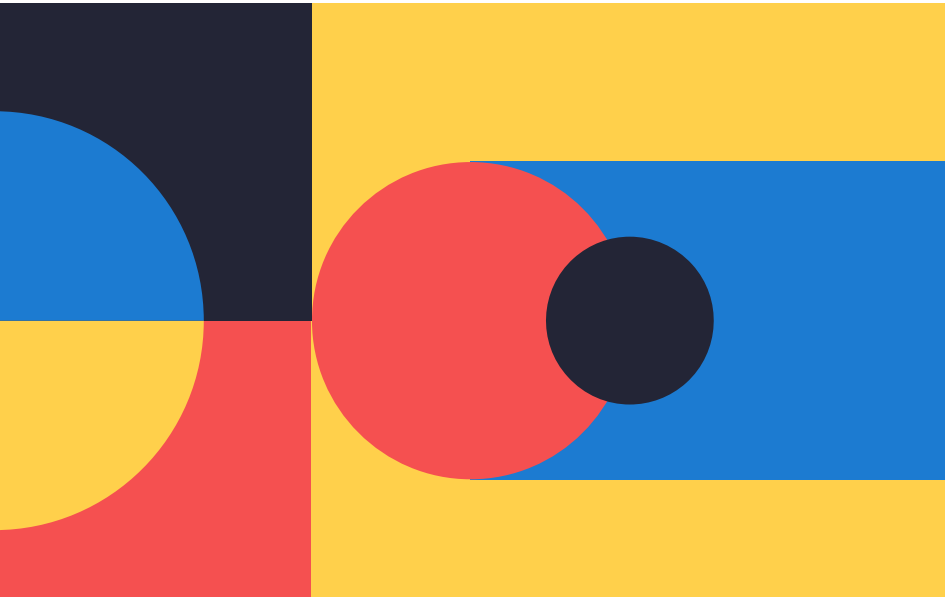
# Gestalt Principles

- **Common Region Principle:** means that elements located within the same area are perceived to be grouped together
- **Figure-ground:** determines whether an element is either in the fore or background.
- **Continuity:** states that elements in a curve or line are related more than elements that are not on the curve.
- **Closure:** in complex visual arrangement we tend to look for a single , recognizable pattern





# SUMMARY



**#UXonIOU**

